

# Jaan Kaer

Muusika: kaerajaan

Seadnud Andre Maaker

## I tuuri A

♩ = 140

Measures 1-12 of the first system. The key signature is two sharps (F# and C#). The time signature is 2/4. The melody is written on a treble clef staff. Chords are indicated above the notes: D (measures 1, 7, 12), C (measures 5, 11). There are rests in measures 2, 3, 4, 8, 9, 10, and 11. The bass line is written on a bass clef staff with notes and rests.

## I tuuri B

Measures 13-16 of the first system. The melody is written on a treble clef staff. Chords are indicated above the notes: A (measures 13, 15), D (measures 14, 16). The bass line is written on a bass clef staff. The text "Bass saadab 8-ndikega" is written below the bass staff.

Measures 17-23 of the first system. The melody is written on a treble clef staff. Chords are indicated above the notes: A (measures 17, 19), D (measures 18, 20). The bass line is written on a bass clef staff.

## II tuuri A

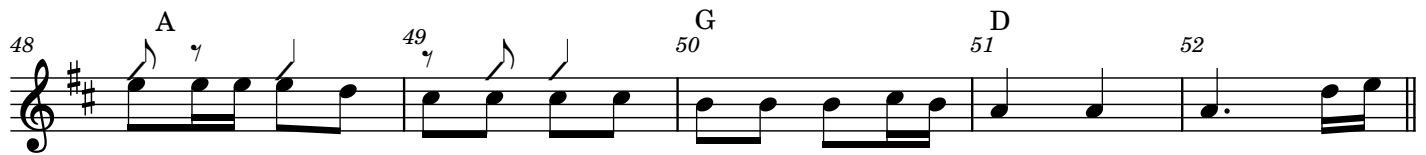
Measures 24-29 of the second system. The melody is written on a treble clef staff. Chords are indicated above the notes: D (measures 24, 29), C (measures 28). There are rests in measures 25, 26, 27, and 28. The bass line is written on a bass clef staff.

Measures 30-35 of the second system. The melody is written on a treble clef staff. Chords are indicated above the notes: D (measures 30, 35), C (measures 34). There are rests in measures 31, 32, 33, and 34. The bass line is written on a bass clef staff.

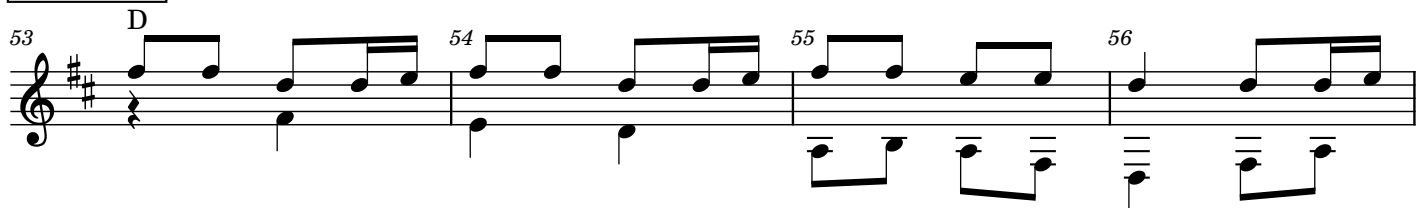
## II tuuri B

Measures 36-43 of the second system. The melody is written on a treble clef staff. Chords are indicated above the notes: A (measures 36, 40), D (measures 37, 41), A (measures 38, 42), D (measures 39, 43). The bass line is written on a bass clef staff. The text "Bass saadab 8-ndikega" is written below the bass staff.

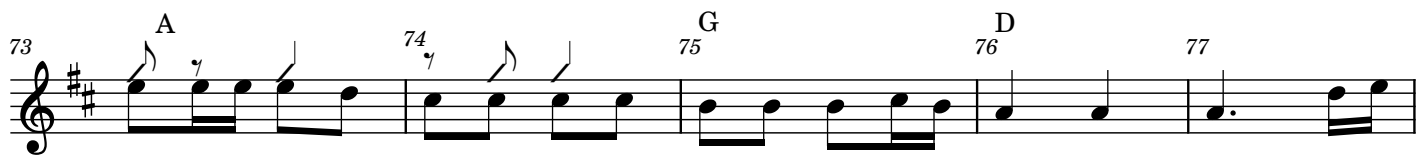
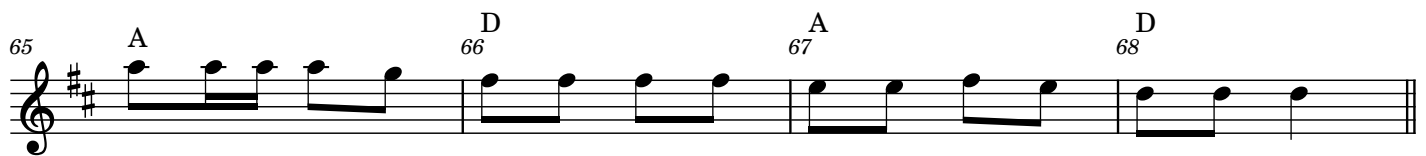
Measures 44-47 of the second system. The melody is written on a treble clef staff. Chords are indicated above the notes: A (measure 44), G (measure 46), D (measure 47). There are rests in measures 45 and 46. The bass line is written on a bass clef staff.



### III tuuri A



### III tuuri B

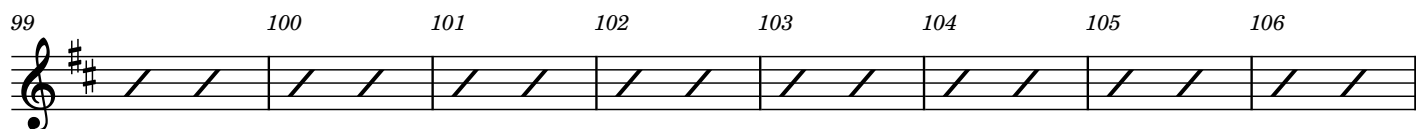
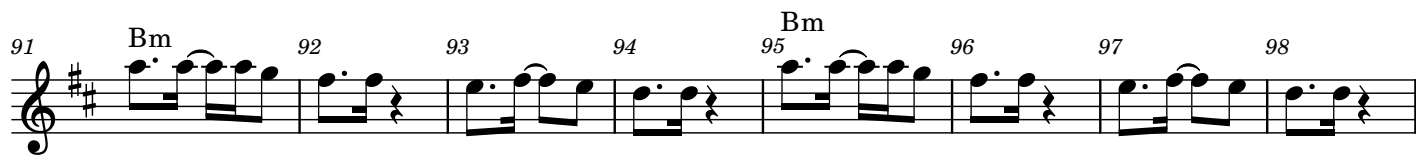


### Vaheosa

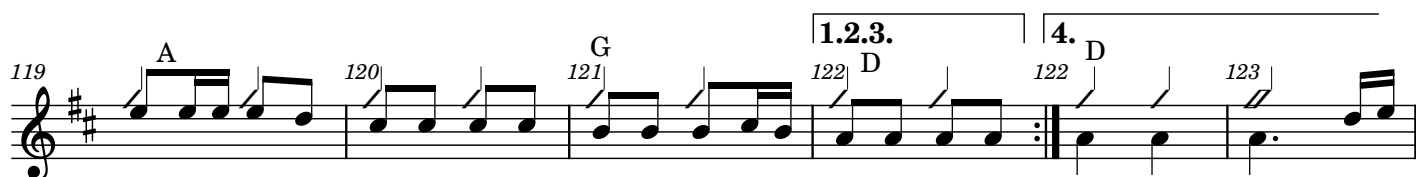


### Bassiriff





#### IV tuuri B



#### Lõpetus

