

# Vingerpolka

Viiulil mänginud Gustav Lindström Kuusalus 1935

Seadnud E. Valdmaa,  
K.-L. Önnis, H.-L. Kiipus

**Eelmäng** ♩ = 120

Measures 1-24 of the Eelmäng section. The key signature is one sharp (F#) and the time signature is 2/4. The notation is in treble clef. Measures 1-4 are a continuous eighth-note pattern. Measures 5-8, 9-12, 13-16, and 17-20 feature a G major chord above the eighth-note pattern. Measures 21-24 continue the eighth-note pattern without a chord.

**I tuuri A**

Measures 25-32 of the I tuuri A section. The notation is in treble clef. Chords are indicated above the notes: G (25), D7 (27), G (29), Am7 (30), Bm7 (30), C (31), D7 (31), and G (32).

**I tuuri B**

Measures 33-40 of the I tuuri B section. The notation is in treble clef. Chords are indicated above the notes: G (33), D7 (34), D7 (35), G (36), G (37), G/B (37), C (38), C#dim (38), D7 (39), and G (40).

**II tuuri A**

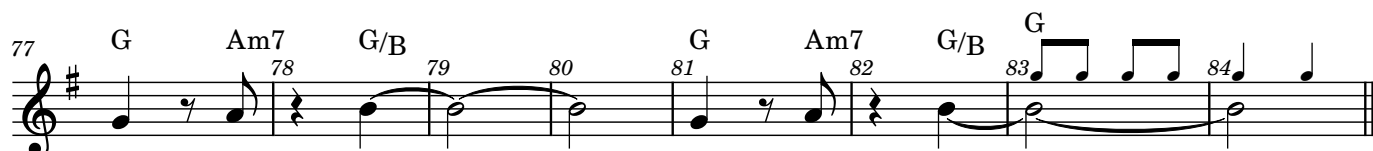
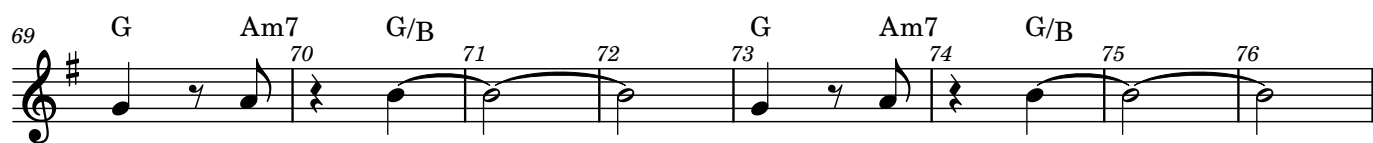
Measures 41-48 of the II tuuri A section. The notation is in treble clef. Chords are indicated above the notes: G (41), Am7 (43), G (45), Am7 (46), Bm7 (46), C (47), D7 (47), and G (48).

**II tuuri B**

Measures 49-56 of the II tuuri B section. The notation is in treble clef. Chords are indicated above the notes: G (49), D7 (50), D7 (51), G (52), G (53), G/B (53), C (54), C#dim (54), D7 (55), and G (56).

**Vaheosa**

Measures 57-60 of the Vaheosa section. The notation is in treble clef. Chords are indicated above the notes: G (57), G (59), and G (60).



### III tuuri A



### III tuuri B

